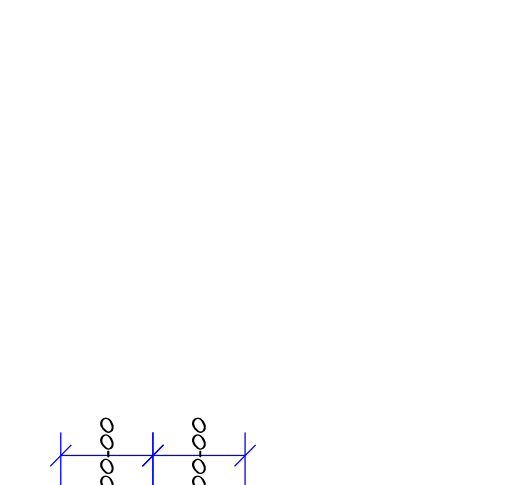
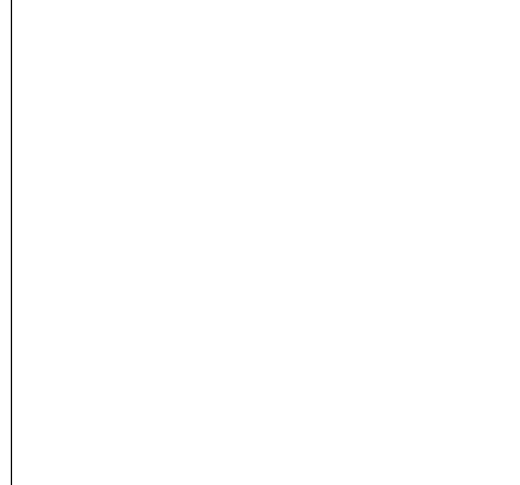
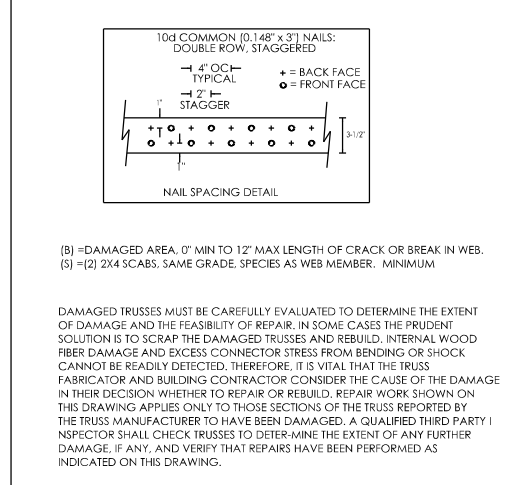


<b>CRACKED/BROKEN WEB REPAIR</b> THE DAMAGE TO THE WEBS OF TRUSSES WITH CRACKS OR BROKEN WEBS SHOULD BE REPAIRED PRIOR TO ERECTION. THE REPAIRS SHOULD BE MADE IN ACCORDANCE WITH THE DESIGNER'S SPECIFICATIONS. THE REPAIRS SHOULD BE MADE IN ACCORDANCE WITH THE DESIGNER'S SPECIFICATIONS. THE REPAIRS SHOULD BE MADE IN ACCORDANCE WITH THE DESIGNER'S SPECIFICATIONS.	<b>SCAB 2X4 O.H. DETAIL</b> ANNOTATE EACH SCAB WITH GRADE AND PRICE AS TOP CHORD DESIGNER'S DESIGN. DESIGN AND PRICE AS TOP CHORD DESIGNER'S DESIGN. DESIGN AND PRICE AS TOP CHORD DESIGNER'S DESIGN.	<b>B.C. FILLER REPAIR</b> <b>RECOMMENDED REPAIR PROCEDURE</b> WEARER (SPACE) FOR NEW LATCHES OF PURLIN WITH 2X4 TOP CHORD OF BENT VERTICAL SCAB TO BOTTOM CHORD AND BOTTOM CHORD TO TOP CHORD. USE 1/2" DIA. X 3/4" LENGTH NAILS.	<b>LONG SPAN TRUSSES</b> <b>WARNING</b> REFER TO BCSI-1 SUMMARY SHEET FOR PROPER HOISTING REQUIREMENTS OF ROOF TRUSSES 30'-0" TO 60'-0". SPREADER BAR TO BE 2/3rds OF LONGEST TRUSS SPAN MEASURED FROM OVERHANG TO OVERHANG.
---	--	---	---

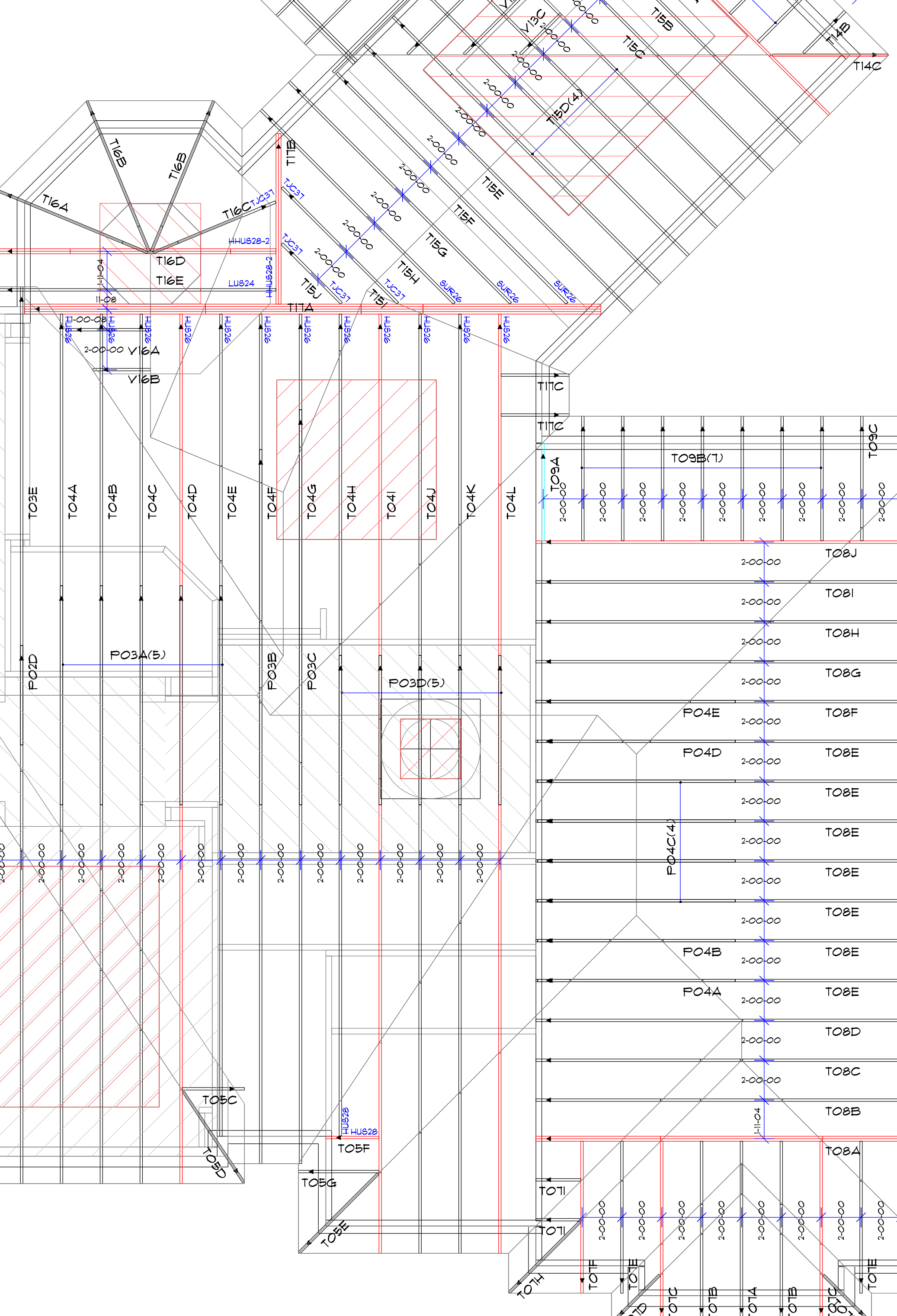
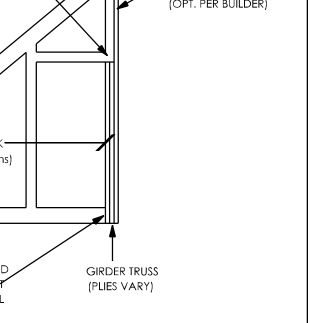
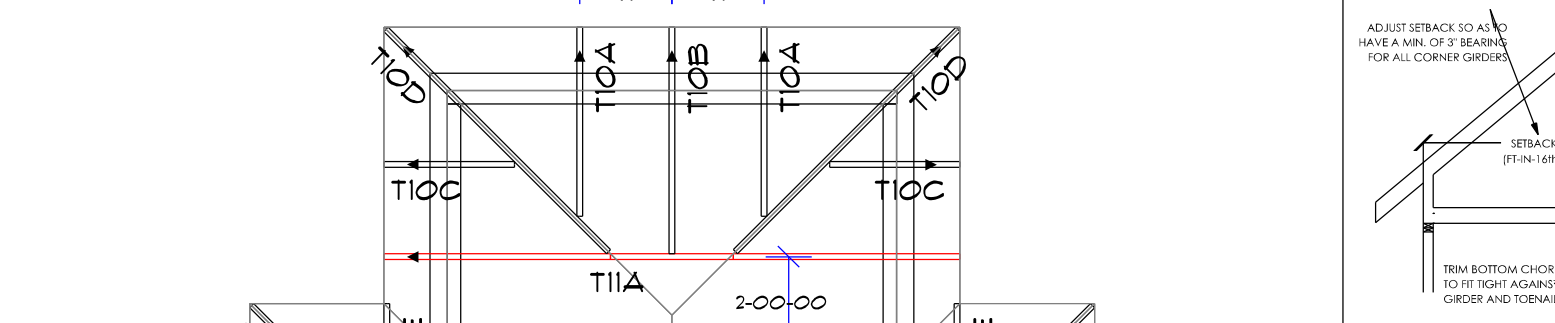


**WARNING**

REFER TO BCSI-1 SUMMARY SHEET FOR PROPER HOISTING REQUIREMENTS OF ROOF TRUSSES 30'-0" TO 60'-0".

SPREADER BAR TO BE 2/3rds OF LONGEST TRUSS SPAN MEASURED FROM OVERHANG TO OVERHANG.

DAMAGED TRUSSES MUST BE CAREFULLY EVALUATED TO DETERMINE THE EXTENT OF DAMAGE AND THE FEASIBILITY OF REPAIR. REPAIRS SHOULD BE MADE IN ACCORDANCE WITH THE DESIGNER'S SPECIFICATIONS. THE REPAIRS SHOULD BE MADE IN ACCORDANCE WITH THE DESIGNER'S SPECIFICATIONS. THE REPAIRS SHOULD BE MADE IN ACCORDANCE WITH THE DESIGNER'S SPECIFICATIONS.



**HOLDOWN SCHEDULE**

USE (1) SIMPSON H2.5A AT EACH BEARING POINT WHERE UPLIFT <#535 AND <#1070

USE (2) SIMPSON H2.5A AT EACH BEARING POINT WHERE UPLIFT >#535 AND <#1070

USE (1) SIMPSON HTS20 AT EACH BEARING POINT WHERE UPLIFT >#1070 AND <#1245

USE (2) SIMPSON HTS20 AT EACH BEARING POINT WHERE UPLIFT >#1245 AND <#2490

▲ = LEFT END OF TRUSS PER ENGINEERED DRAWINGS

**LAYOUT NOTES**

**REVIEW PRIOR TO ERECTION**

DIMENSIONS GIVEN ARE IN (FEET)-(INCHES)-(16THS)

TRUSS TO TRUSS DIMS. FROM CENTERLINE (U.N.O.)

SETBACK DIMENSIONS ARE FROM OUTSIDE OF WALL (STUD NOT SHEATHING) TO FACE OF GIRDER

REFER TO TRUSS DRAWINGS FOR BRACING REQUIREMENTS CONTINUOUS LATERAL BRACING (CLB) ONLY USED ON 3 (THREE) OR MORE CONSECUTIVE TRUSSES WITH MATCHING WEB PATTERNS

PURLIN SPACING @ 24" O.C. MAX @ PIGGYBACK FLAT TOP CHORDS AND TRUSSES WITH FLAT TOP CHORDS PERPENDICULAR TO ROOF SLOPE (U.N.O.)

REFER TO SHOP DRAWINGS FOR OVERHANG AND CANTILEVER LENGTHS (DIMENSIONS ARE NOT GIVEN ON LAYOUT)

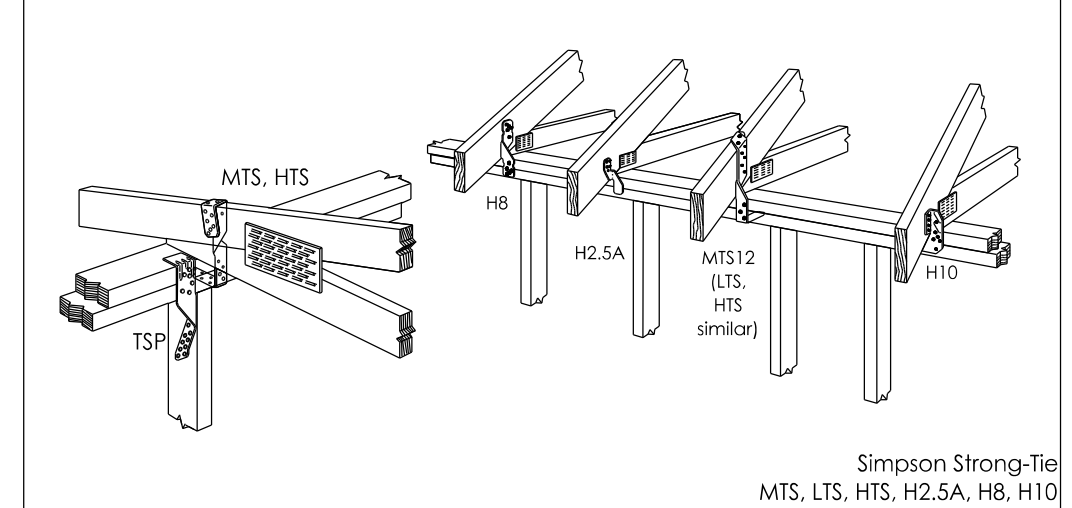
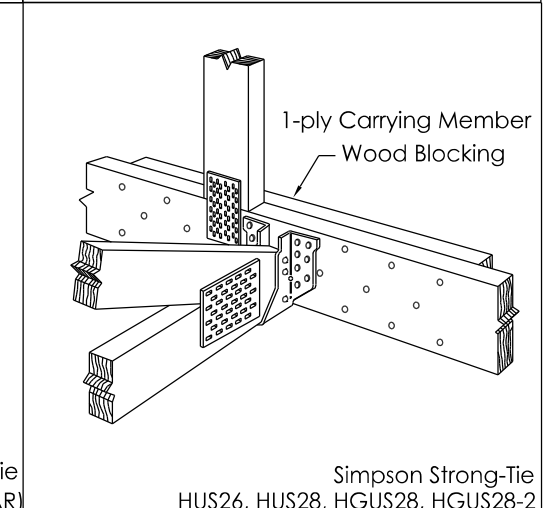
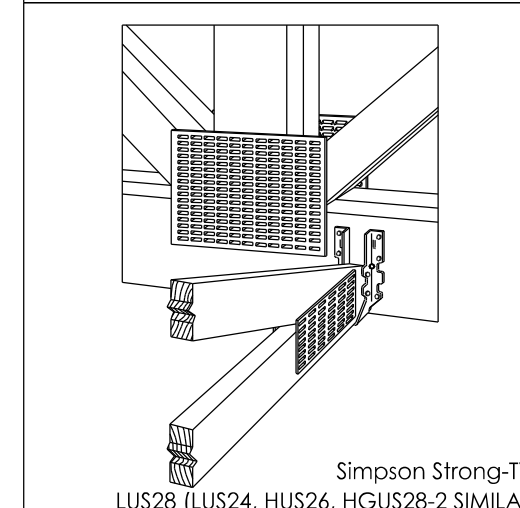
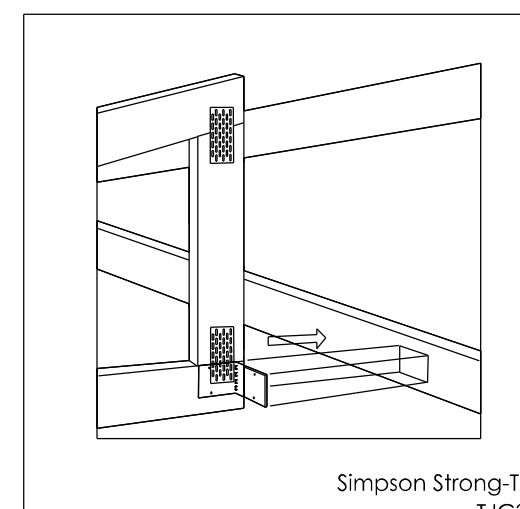
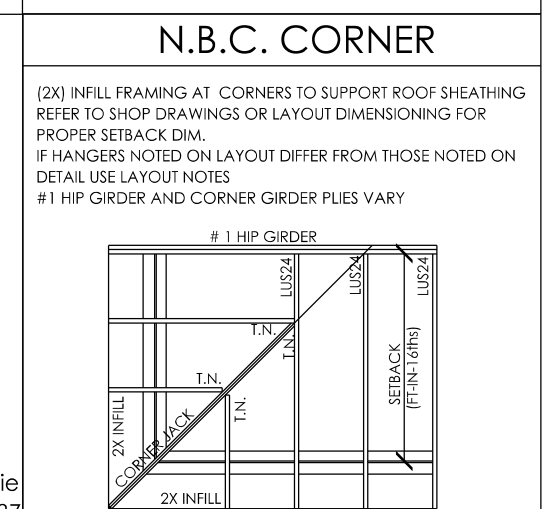
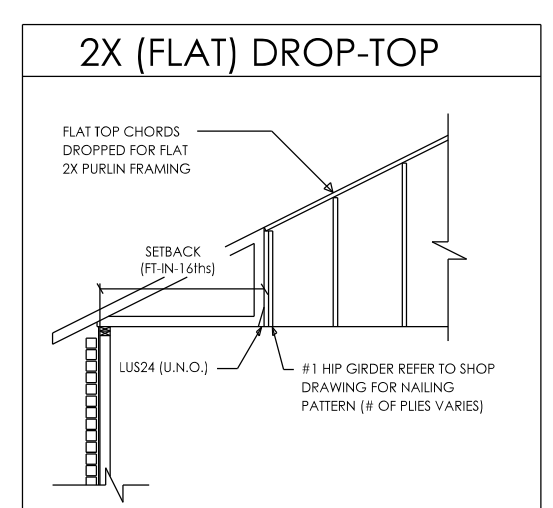
REFER TO BCSI-1 SUMMARY SHEET FOR PROPER HANDLING, BRACING & INSTALLATION REQUIREMENTS

REVIEW ALL PAPERWORK PRIOR TO INSTALLATION OF TRUSSES BACK-CHECKS WILL NOT BE ACCEPTED WITHOUT SIGNED APPROVAL, BY MANUFACTURER, PRIOR TO ALTERATION

DO NOT CUT OR MODIFY ANY TRUSS OR REMOVE ANY WEBBING WITHOUT THE CONSENT OF AN AUTHORIZED ASSOCIATE FROM NISBET BROWER COMPONENTS. ANY ALTERATION COULD LEAD TO THE COMPLETE FAILURE OF THE TRUSS OR TRUSS SYSTEM RESULTING IN INJURY OR DEATH

PROVIDE THIS TRUSS PLACEMENT GUIDE AND ALL ENGINEER STAMPED TRUSS DRAWINGS TO THE INSPECTOR AT FRAMING INSPECTION

THIS DOCUMENT IS A TRUSS PLACEMENT DIAGRAM NOT A ROOF OR FLOOR PLAN. REFER TO ARCHITECTURAL DOCUMENTS FOR ROOF OR FLOOR DESIGN AND CONVENTIONALLY FRAMED AREAS. WHERE DISCREPANCIES OCCUR, ARCHITECTURAL PLANS ARE TO TAKE PRECEDENCE. PLEASE CONTACT TRUSS MANUFACTURER IMMEDIATELY IF DISCREPANCIES OCCUR.



CUSTOMER: **ESTATE HOMES LTD**

JOB NAME: **JAMES RESIDENCE**

LOCATION: **CINCINNATI, OH 45241**

NBC REFERENCE #: **T1204127**

T.P.D. PRINTED DATE: **September 21, 2012**



**TRUSS PLACEMENT DIAGRAM**

**NOT TO SCALE**